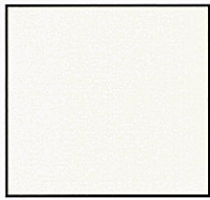


PrismaGuard Paint Factory Finish Colors



Alpine (White)



Onyx



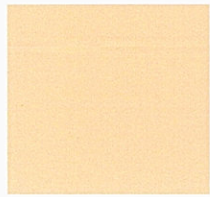
Black+



Storm



Granite



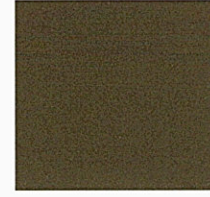
Southern Breeze



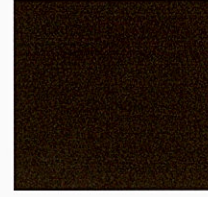
Tan



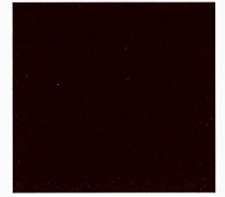
Stone



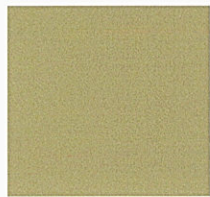
Dusk



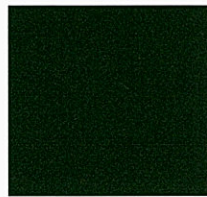
Mocha



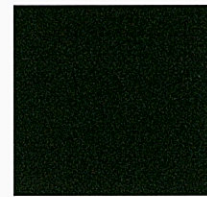
Chestnut



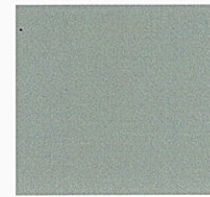
Cypress



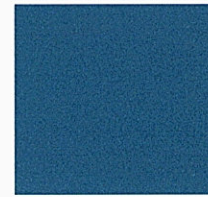
Forest Green



Evergreen



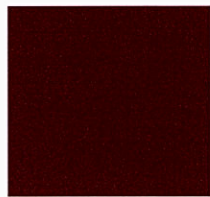
Seabreeze



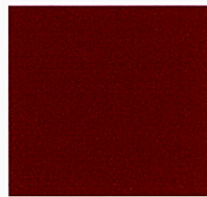
Ocean Blue



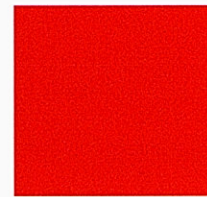
Indigo



Cabernet



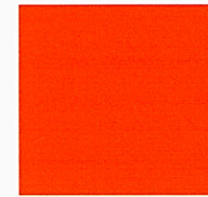
Red Brick



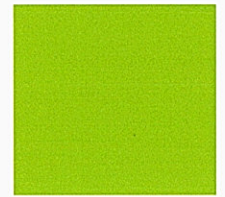
Ruby Red



Daisy



Metropolitan
Orange



Country Green

+Trade matched to FrontLine Black and DuraTech Black

Due to the printing process, colors shown approximate the actual paint color as closely as possible.

PrismaGuard Stain Factory Finish Colors



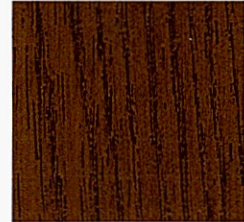
Acorn



Wildflower Honey



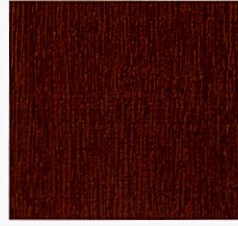
Rustic Clay



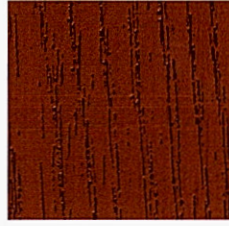
Barley



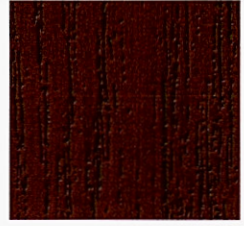
New Earth



Autumn Harvest



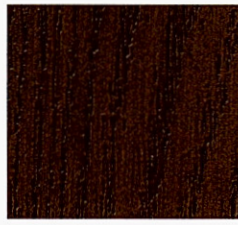
Redwood



Mulberry



Fig



Dark Maple



Driftwood



Raven

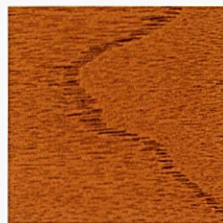


Shale

Note: Finish colors may vary from an actual application due to fluctuations in finishing or printing.



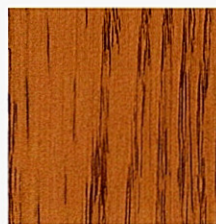
Classic Craft
Mahogany



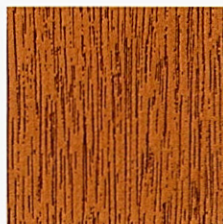
Classic Craft
Walnut



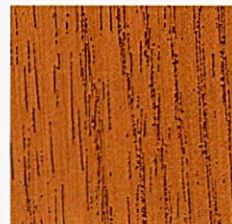
Classic Craft
American



Classic Craft Oak



Fiber Classic
Mahogany



Fiber Classic Oak

Samples show differences in grain between the different door styles.
All are shown in Wildflower Honey.

PrismaGuard Paint & Stain Finish

Backed by a 10-Year Limited Warranty



Warranty Coverage

When applied to Therma-Tru® fiberglass doors, sidelites, transoms and genuine Therma-Tru components of a door system*, PrismaGuard finish is warranted against:

- Peeling and Flaking
- Blistering
- Chalking
- Checking

**Genuine Therma-Tru components include applied or inserted panels, astragal, dentil shelf, simulated divided lites, wood grilles, as well as rot-resistant, primed Pine or Oak jambs, mullions and brickmould.*

Exclusions

PrismaGuard warranty coverage does not include:

- Scratches or visual imperfections outside of standard parameters
- Performance or integrity of third-party frame products
- Labor for removing or reinstalling the product
- Warranty is not transferrable
- Note: 3-Year Limited Warranty for commercial/multi-resident properties

Maintaining Warranty Coverage

REQUIRED MAINTENANCE

(Required for continued warranty coverage)

CLEANING THE DOOR

For continued warranty coverage it is required that the surfaces of the door are cleaned every 6 months, or on an as needed basis. For routine cleaning, a soft towel, warm tap water and mild soap should be used.

DIRECTIONS:

- Combine water and soap solution
- With a soft towel, gently clean the interior and exterior face of the door
- Rinse the surface of the door with clean water
- Dry the face of the door with a soft towel

Maintenance Recommendations

(Not required for continued warranty coverage)

TOUCH-UPS FOR SCRAPES AND SCRATCHES

For scrapes and scratches 2-inches or less on the door surface, we recommend the use of a touch-up kit. It is specifically designed to coordinate with the color of your door and is generally available from the dealer/distributor from which the door was purchased.

TOPCOAT

All exterior finishes can be affected by exposure to sun, weathering, moisture and air pollutants. Therma-Tru recommends applying a high quality, low gloss exterior-grade urethane clear coat that does not contain Ethylbenzene (such as Same-Day® Stain Top Coat) to the door surface once there is a decrease in gloss, if topcoat feels rough to the touch, or every 3-5 years as a part of a preventative maintenance routine. Be careful to follow all manufacturers' instructions.