

# CATALOG



Superior productivity.  
Superior performance.



## GLOBAL USE

- **World's Leading Induction Based Roofing System**
- **Nearly 2 Billion Sq. Ft. Installed**
- **1,000's of Projects**
- **37 Countries**
- **Accepted and supported by most roofing system manufacturers**



# RhinoBond

## CHANGING THE WORLD, ONE ROOF AT A TIME

With wind ratings of FM 1-180 and higher, more evenly spaced fasteners and zero membrane penetrations, it's no wonder that RhinoBond is recognized as one of the best performing roofing systems in the industry. You might say it's revolutionizing the commercial roofing industry around the globe.

Based on patented Sinch<sup>®</sup> electromagnetic welding technology, RhinoBond is approved by Factory Mutual and most roofing system manufacturers. The system uses one fastener and plate to secure the insulation and the thermoplastic membrane. Since the fastening points are spread across the roof in a grid pattern, the uplift load is more evenly distributed. The result is higher wind ratings with fewer fasteners, fewer seams and zero penetrations of the new membrane.

## GET RHINOBOND PERFORMANCE FROM START TO FINISH

Using the entire RhinoBond System including RhinoTrac, RhinoBond Plate Marker and RhinoBond Hand Welder, provides RhinoBond performance everywhere on the roof.

RhinoTrac can drive fasteners straight and to the right depth every time. The Plate Marking tool helps find, and temporarily mark, RhinoBond Plates under the membrane, so contractors know where to weld. The Hand Welder enables induction welding everywhere on the roof, including under raised structures and on vertical surfaces!



Check out our RhinoBond calculator to see how much material you can save on your next project. Visit [OMGRoofing.com](http://OMGRoofing.com).



RhinoTrac



RhinoBond



Hand Welder



Plate Marker

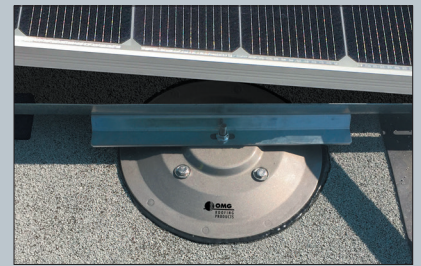




# PowerGrip

## HARNESS THE SUN WITH POWERGRIP

When it comes to securing solar racking systems to commercial rooftops, nothing is as easy or practical as OMG's family of PowerGrip Products. OMG PowerGrip Plus and PowerGrip Universal are watertight anchor systems that provide a secure connection directly to the roof deck or structural members. Regardless of the roof material or attachment, OMG has a PowerGrip solution that works for every commercial roofing system.



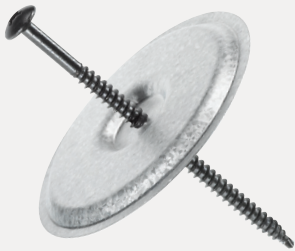
### OlyLok Locking Impact Nail

1.4" and 1.8" (35 and 45mm) tube lengths with 2.7" (70mm) plate  
**LWC G CWL** deck types



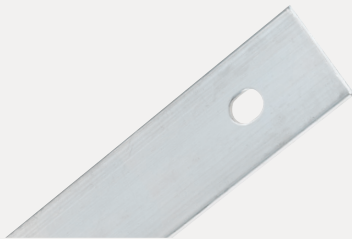
### Base Sheet Fastener

1.2" and 1.75" (30 and 45mm) lengths  
Available assembled with 2.75" (70mm) plate  
**LWC G\*** deck types \*Restrictions apply.



### ASAP® (Assembled Screw And Plate)

2¼"–8" (55–200mm) lengths; Standard or Heavy Duty Fasteners; Steel or Locking Plastic Plates  
**S W** deck types



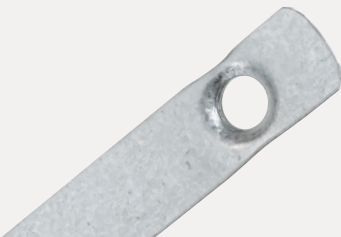
### Flat Bar

1" (25mm) wide, .090" (2.3mm) thick.  
Punched 6", 8", or 12" (150, 200 or 300mm) o.c. Terminates single-ply membrane at parapet walls



### Lip Bar

¾" (19mm) wide, ⅜" (5mm) lip, .090" (2.3mm) thick. Punched 6", 8", or 12" (150, 200 or 300mm) o.c. Terminates single-ply membrane at parapet walls



### Lite-Deck Batten Bar

18 ga. (1.3mm) thick  
Punched 6" or 12" (150 or 300mm) o.c.  
**LC G CWL** deck types



### Polymer Batten Bar

¾"–1" (19–25mm) wide  
Punched 3" (75mm) o.c.  
**S W SC** deck types



OMG  
PowerGrip PLUS



OMG  
PowerGrip UNIVERSAL

# Fasteners

## Standard RoofGrip® Drill Point Fastener

1½"–8" (40–200mm) lengths  
#3 Phillips head or with 1/4" hex head  
**S W** deck types

## Heavy Duty Roofing Fastener

1¼"–24" (30–610mm) lengths  
#3 Phillips head  
**S W SC** deck types

## Extra Heavy Duty Fastener

2"–16" (50–405mm) lengths  
#3 Phillips head  
**S W AL** deck types

## RetroDriller Fastener

4"–10" (100–255mm) lengths  
#3 square drive  
**P** deck type

## Purlin Fastener

2"–8" (50–200mm) lengths  
¼" hex head  
**P** deck type

## HeadLok®

2⅞"–18" (70–455mm) lengths  
Oversized head; installed with SpiderDrive® bit  
**S W SC** deck types

## CD-10

2"–12" (50–305mm) lengths  
Flat top pan head  
Diamond guide point  
**SC** deck type

## Lite-Deck Fastener

2⅝"–12" (65–305mm) lengths  
6 lobe drive  
**G CWF** deck types

## Polymer GypTec®

2½"–12" (60–305mm) lengths  
¼" (5mm) square drive  
**G CWF** deck types

## Masonry Anchor

⅞"–2" (22–50mm) lengths  
⅜"–¼" (4–6mm) diameters  
Zinc plated pin  
**CMU M SC** substrates



More than 35 years ago, OMG started as a fastener manufacturer for commercial roofing. Today, OMG offers the industry's widest assortment of specialty roof fasteners and plates for virtually every roofing application and deck type.



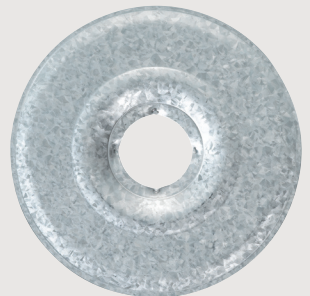
**Steel Plate**  
2" and 3" (50 and 75mm)  
diameters available



**Plastic Locking Plate**  
2" and 3" (50 and 75mm)  
diameters available



**AccuTrac® Plate**  
For use with AccuTrac tool  
3" (75mm) square steel insulation  
plate, flat or recessed



**GypTec® Plate**  
2" and 3" (50 and 75mm) diameter  
plates available



**RhinoBond® Plates**  
For PVC and TPO membranes  
3" (80mm) diameter



key	
<b>S</b>	Steel
<b>W</b>	Wood
<b>G</b>	Gypsum
<b>M</b>	Masonry
<b>P</b>	Purlins
<b>AL</b>	Aluminum
<b>SC</b>	Structural Concrete
<b>LC</b>	Lightweight Concrete
<b>LWIC</b>	Lightweight Insulating Concrete
<b>CMU</b>	Concrete Masonry Unit
<b>CWF</b>	Cementitious Wood Fiber



# OlyBond Adhesives

OLYBOND – THE MOST TRUSTED NAME IN ADHESIVE INSULATION ATTACHMENT

OlyBond® Insulation Adhesives are easy to use, hassle-free and designed to get you off the roof and onto the next job quickly. OlyBond is a fast-acting, two-component, low-rise polyurethane foam adhesive designed to adhere most insulation types to a wide selection of common roof decks and materials.

OlyBond can be used in both new and re-roofing applications, including jobs that require multiple insulation layers. No matter what size job you have, large or small, there's an OlyBond adhesive that's right for your next project.



Product	Packaging	Application Equipment	Ideal Job Type
OlyBond Classic	55 Gal Drum sets (110 gallons)	Spray Rig	Large production jobs and new construction.
OlyBond500 Drums	15 Gal Drum sets (30 gallons)	PaceCart3 with Drum Conversion Kit	Large production jobs.
OlyBond500 Bag-in-Box	5 Gal Bag-in-Box Sets (10 gallons)	PaceCart3	Medium to large jobs.
OlyBond500 SpotShot	1,500 ml Cartridge sets (4 / box)	SpotShot Power Applicator or Hand Applicator	Small to medium jobs.
OlyBond500 Canisters	Two-part Canister Sets	Self Contained	Medium jobs where large application equipment is not practical.

## FEATURES & BENEFITS

- Odor free – excellent for sensitive areas, such as schools, office buildings and hospitals
- Chemical cure results in fast set-up time
- No thermal bridging caused by fasteners
- Extremely high wind-uplift ratings
- Easy to ship; non-hazardous
- Wildly accepted with more FM approvals than any other insulation adhesive
- Packaging options for every project size and scope

PaceCart3



Canisters



Power Gun Applicator





## KEEP THE WEATHER OUT OF THE ENVELOP WITH OMG EDGESYSTEMS!

### PROVEN

- ANSI/SPRI/FM 4435/ES-1 tested and approved!
- Industry leader for more than 65 years
- Legacy includes first engineered roof edge system and first roof edge system to receive UL Classification
- Up to Category 5 Windstorm Warranties for winds up to 155 mph

### TRUSTED

- Wide range of Fascia, Coping and Water Control Systems for every application!
- Continuous R&D to develop innovative products
- More than 25 roof edge system patents

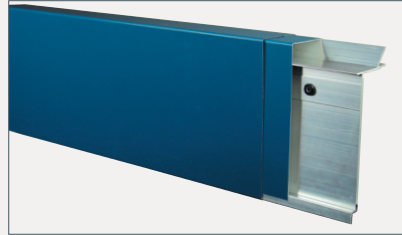
### CUSTOMER FOCUSED

- Rapid shipment – 3 days or less on select products!
- Highly experienced Customer Service and Engineering teams to address any application
- Supported by the largest field sales team in the industry

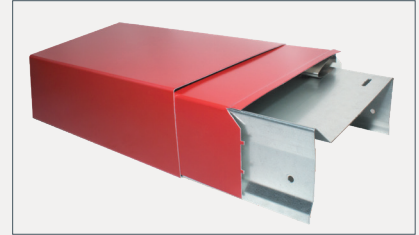


# OMG EdgeSystems

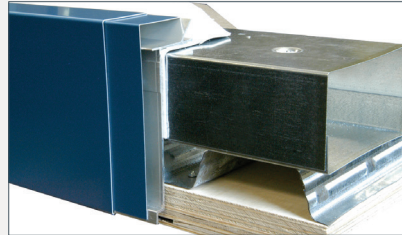
THE ROOF'S FIRST LINE OF DEFENSE!



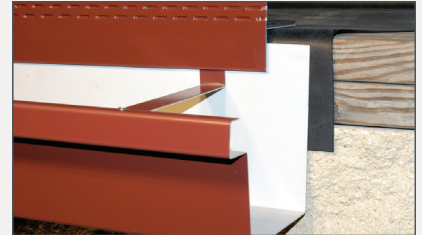
TerminEdge Fascia



PermaSnap Coping



OMG EdgeBox



OMG Gutter

In addition to acting as an effective termination and transition between the roof system and other building components, the edge system also serves as a roof system's first line of defense against wind and water infiltration.

Since 2003, edge metal systems have been included in the International Building Code (IBC). According to the International Code Council (ICC), "the International Building Code is in use or adopted in 50 states, the District of Columbia, Guam, Northern Marianas Islands, New York City, the U.S. Virgin Islands and Puerto Rico." Accordingly, any roofing project subject to IBC is required to have an edge metal system that meets defined performance requirements.

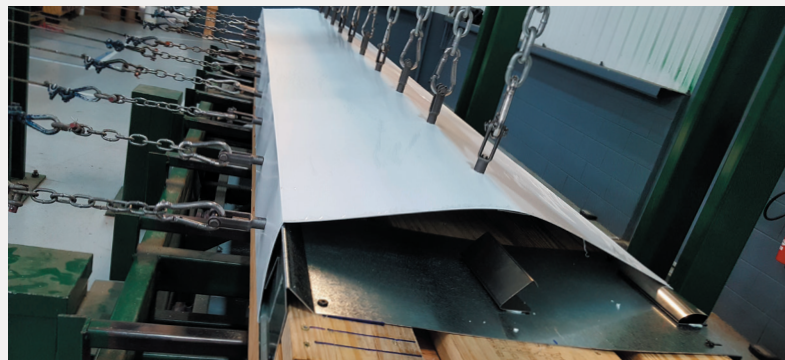
OMG offers the industry's widest selection of Factory Mutual tested and approved edge metal systems for low sloped roofs. From fascia and gravel stops, to coping systems, water control, and custom designed edge systems, OMG can accommodate all of your edge needs. In addition, most OMG EdgeSystems come with a 20 year, 110 mph wind warranty or a 25 year, 155 category 5 Wind Warranty.

Most OMG Edge products feature:

- Snap-on covers
- Hidden fasteners
- Concealed splice plates
- Galvanized or extruded retainers that are pre-punched for easy application.

Plus we offer a wide selection of over 30 Kynar500® colors and several finish options. All Kynar coated products come with a 30 year finish warranty.

Contact OMG EdgeSystems at 800.892.9173 for details, samples and color chips.



# OMG RetroDrains

**SO EASY TO INSTALL, YOU WON'T NEED A SUBCONTRACTOR!**

OMG offers the broadest line of insert drains in the industry, all designed to provide a secure, watertight connection to the existing plumbing drain leader, for a better performing roof.

Durable and highly reliable, OMG's line of OlyFlow Drains exceed industry standards and are engineered for easy installation from the rooftop without disturbing building occupants. Several OMG drains incorporate our exclusive vortex breaker technology for flow performance that rivals many traditional new connection drains. In addition, many OlyFlow Drains are "drop-in-ready" for installation directly from the box, and are made with a one-piece seamless body with extra-large flange and built in sump for improved performance.

When your job calls for drain work, call for an OlyFlow Drain from OMG Roofing Products!

## OMG EXCEEDS THE STANDARD!

ANSI/SPRI RD-1 is a national performance standard for retrofit roof drains. While most retrofit roof drains are not tested to this standard, OlyFlow Insert Drains exceed the ANSI/ SPRI RD-1 standard.



Hercules

Good



Hercules Plus

Better



SpeedTite

Best

# Accu-Tools

**THE RIGHT TOOL MAKES ALL THE DIFFERENCE**

The AccuTrac family of stand-up insulation and membrane attachment tools offers a more productive and healthier alternative for installing roofing fasteners.

There are three options available: AccuTrac for insulation attachment, AccuSeam for installing seam plates, and RhinoTrac for installing RhinoBond plates. In one motion, the tool aligns the plate as the operator drives the fastener, doing the work of two and saving valuable time and resources. Since each fastener is properly aligned perpendicular to the surface of the roof, the line of Accu-Tools helps to ensure you get maximum thread engagement, pullout resistance, and a better overall installation.

## COMPARE THE LABOR STEPS

AccuTrac, AccuSeam and RhinoTrac can help you get ahead of schedule, allowing you to redistribute job-site labor to handle time-consuming detail work or other tasks. The chart below shows the possible productivity gains compared to the labor steps and time to install loose plates and screws or pre-assembled fasteners.

LABOR STEPS				
Method	Step 1	Step 2	Step 3	Step 4
Loose Screws & Plates	Place Board or Membrane	Place Plate	Place Screw	Drive Screw
Assembled Screws & Plates	Place Board or Membrane	Place ASAP	Drive ASAP	
AccuTrac or RhinoTrac System	Place Board	Install Screw & Plate using Tool		
AccuSeam System	Roll Out Membrane	Install Screw & Plate using Tool		
	Time →			



# PipeGuard Pipe Supports



## WE DO THE HEAVY LIFTING FOR YOU!

When it comes to supporting small rooftop pipes and conduit, nothing is faster or easier than OMG PipeGuard®. With nine models ranging in size and configuration, there's a PipeGuard for virtually every application. No wonder PipeGuard is the industry's preferred pipe support. Nothing is as fast, easy or economical.

The line of PipeGuard Pipe Supports is designed to hold rooftop pipes up to 6-inches (150 mm) in diameter. Plus PipeGuard Pipe Supports are better alternatives than wood blocks because they will not rot or deteriorate. Made of heavy duty EPDM and/or recycled HDPE, OMG PipeGuards will not damage roof covers. Additionally, they are compatible with steel and PVC piping, conduit and copper tubing, as well as electrical, solar, gas and HVAC lines.

PipeGuard units install in seconds with no special tools! Nothing is faster or easier! Be sure to ask about our custom capabilities too!



# At your service



When it comes to service, no one beats OMG Roofing Products. We have the largest directly employed field service team in the commercial roofing industry available to help. Our team offers product demonstrations, training, job starts, fastener pull tests to determine deck suitability and much more. Let our local sales representative help with your next project.

OMG is the leading U.S. supplier of roofing fasteners, roof insulation adhesives, edge metal systems, retrofit roof drains, pipe supports and installation productivity enhancement tools.

Our products are available nationwide through a network of roofing distributors, and supported by our national network of direct factory sales personnel.

 **OMG**  
ROOFING PRODUCTS  
153 BOWLES ROAD, AGAWAM, MA 01001  
800-633-3800 WWW.OMGROOFING.COM

Superior productivity.  
Superior performance.

INFO@OMGINC.COM

